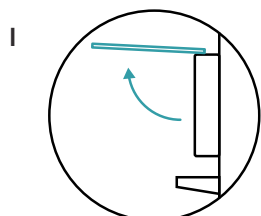
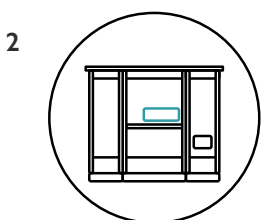


HOW TO CHANGE AN ALAVO SOAP CARTRIDGE

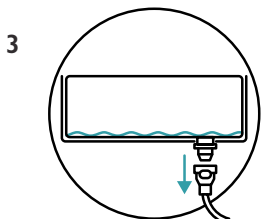
SOAP REFILL CARTRIDGE SYSTEM 2018 – PRESENT REFILL THE SOAP CARTRIDGE SYSTEM



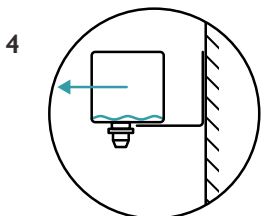
Open mirrors on front of Alavo



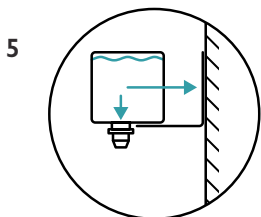
Locate the white cardboard soap refill box



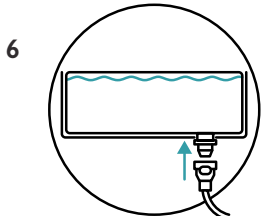
Disconnect empty soap refill box by pressing firmly on the button and pulling downwards



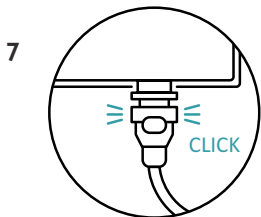
Slide empty soap refill box off bracket. Please recycle cardboard box and ramp



Pull out spout from inside new soap refill box and slide into bracket



Push connector firmly onto refill spout



Click indicates successful connection

To bleed the soap system, attach pouch (Cartridge) and let it drain through into reservoir. Then follow steps 4 – 6 on 'Soap Tank System 2012 – 2017' (The first time this is done the reservoir will be filling from empty and will use most of the cartridge in one go. It is recommended that after the reservoir is full to attached a new full refill cartridge.

Foaming soap refill cartridges can be ordered online or via the phone 01424 202224



DOLPHIN
Dolphin Solutions

Tel: +44 (0)1424 20 22 24
www.dolphinsolutions.com