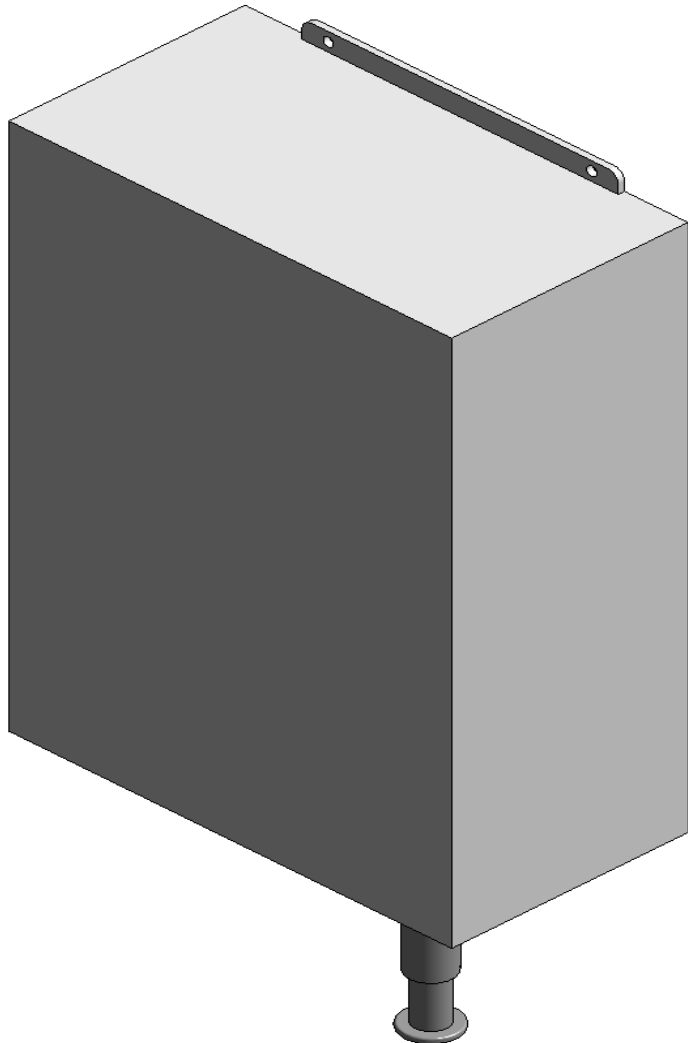


DOLPHIN SOLUTIONS LIMITED DOLPHIN BEHIND MIRROR SOAP DISPENSER

06.3106



Family Types

Name: 06.3106 Dolphin Behind Mirror Soap Dispenser

Parameter	Value
Materials and Finishes	
Material	Satin finish stainless steel grade 1.4301 (304). Soap Valve: Polished chrome plated brass
Dimensions	
Width	210mm
Weight	Approximate unloaded unit weight: 2kg
Projection	112mm
Height	295mm
General	
Warranty	12 months from date of purchase.
Product Page Link	https://www.dolphinsolutions.co.uk/product/dolphin-behind-mirror-soap-dispenser
Product Data	Behind mirror, drop-down loading, satin finish stainless steel soap dispenser with 1 litre capa
Liquid Soap	It is recommended usind Dolphin Solutions Ltd. 'Pearlised' liquid soap (Product code 06.8305
Care and Maintenance	If dispenser fails to function, empty the liquid soap from the soap tank and re-fill with warm
Identity Data	
URL	www.dolphinsolutions.co.uk
Tel No.	+44 (0) 1424 202 224
Model	06.3106
Manufacturer	Dolphin Solutions Ltd.
Fax No.	+44 (0) 1424 205 200
Email	info@dolphinsolutions.co.uk
Description	Behind mirror soap dispenser
Assembly Code	D2010900
Address	Southpoint, Compass Park, Bodiam, Robertsbridge, TN32 5BS
Keynote	
Type Comments	
Cost	

Family Types: New..., Rename..., Delete

Parameters: Add..., Modify..., Remove

Lookup Tables: Manage...

OK Cancel Apply Help